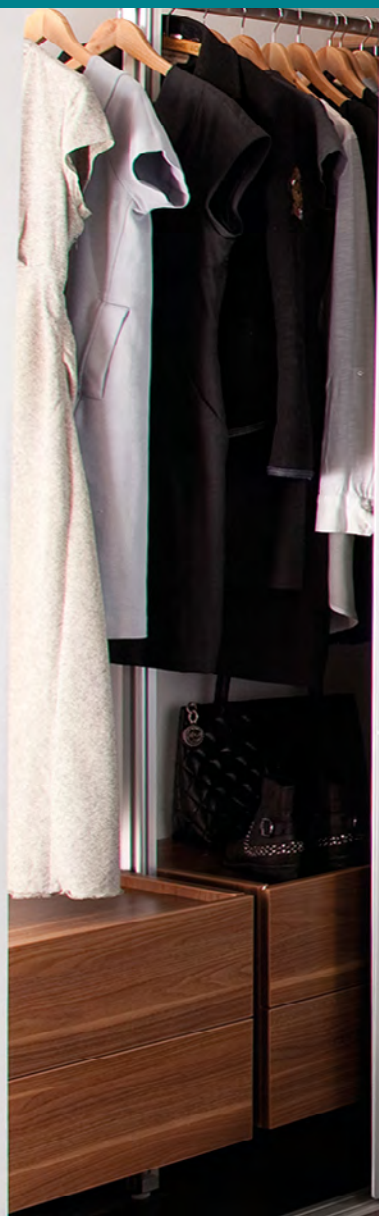


space.pro<sup>o</sup>

CONTRACT

Ellipse  
sliding doors



Make a statement in your home.

Framed perfectly within a beautifully curved aluminium frame. This door style complements any modern room or office giving it that added luxurious feel.

New homes  
New spaces



Call **0333 344 8583**

Email **tenders@spaceprocontract.com**

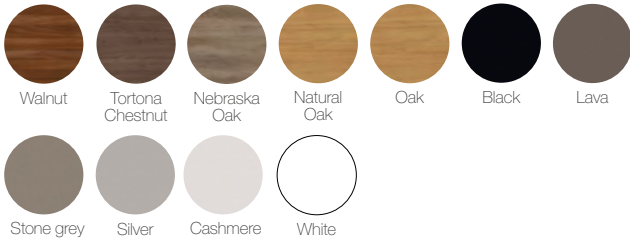
Or visit **spaceprocontract.com** for more information

# Ellipse



## Colours (standard range)

### Panel



### Glass & mirror

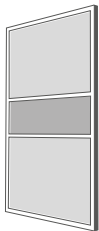


Frame finish available in Satin silver.

## Door designs



Single panel



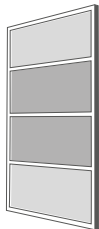
Fineline



Wideline



Extra wideline



4 panel

## Technical information

Calculating doors and overlap widths.

Sliding door overlap	56mm
Door height	Opening height minus 54mm (track & wheel allowance)
Door width (for sliding doors) (not including liners)	$\frac{\text{Opening width} + (\text{number of overlaps} \times \text{overlap length})}{\text{Number of doors}}$
Stile length	Door height minus 2mm
Rails & h-section lengths	Finished door width minus 2 x overlap
Panel height (1 panel)	Door height minus 26mm
Panel height (multi panel)	Panel height divided by the quantity minus 1mm for each break
Panel width	Finished door width minus 70mm

## Door construction

- Aluminium frame
- 8mm wood effect panel
- 4mm glass & mirror  
(4mm backing board is used with glass and mirror panels in doors with multiple panel in mixed materials)