

space.pro^o

CONTRACT

Switch sliding doors



The perfect choice for creating an elegant walk-in wardrobe or for use as a room divider.

The Switch design with its curved, ergonomic frame is both contemporary and versatile and has a variety of glass and mirror finishes to choose from. Choose glass on both sides or a mirror with a different colour glass on the reverse to create that modern look.

New homes
New spaces

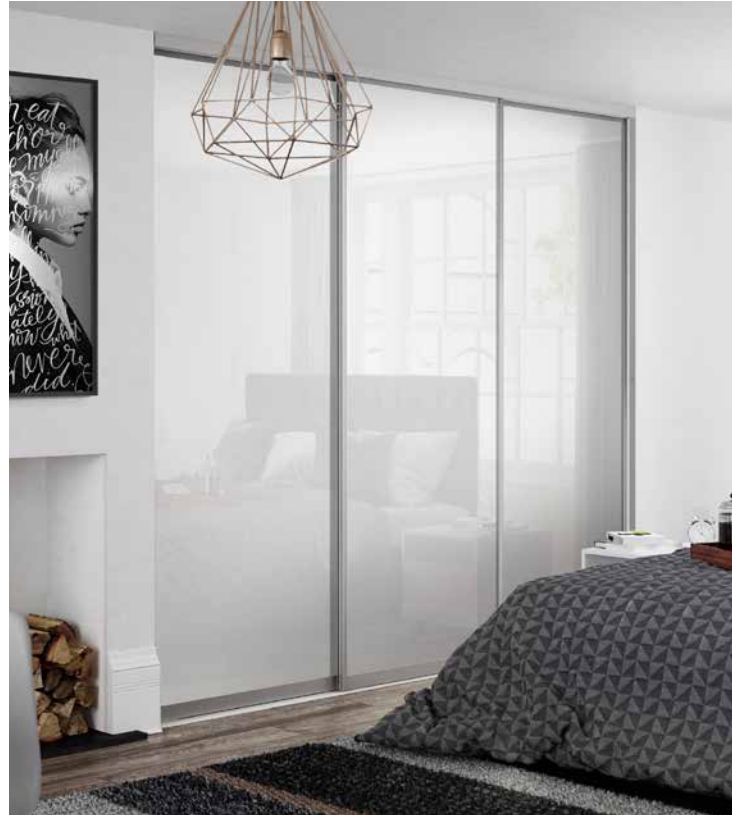


Call **0333 344 8583**

Email **tenders@spaceprocontract.com**

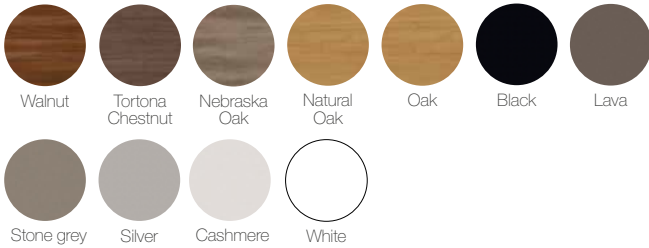
Or visit **spaceprocontract.com** for more information

Switch

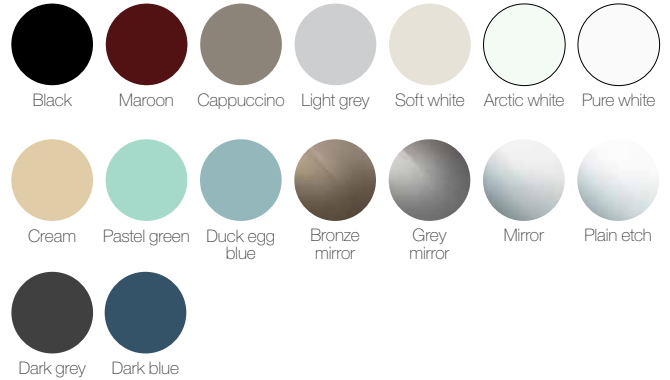


Colours (standard range)

Panel



Glass & mirror

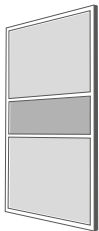


Frame finish available in Satin silver.

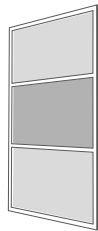
Door designs



Single panel



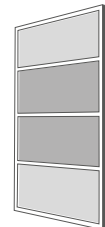
Fineline



Wideline



Extra wideline



4 panel

Technical information

Calculating doors and overlap widths.

Sliding door overlap	24mm
Door height	Opening height minus 60mm (track & wheel allowance)
Door width (for sliding doors) (not including liners)	$\frac{\text{Opening width} + (\text{number of overlaps} \times \text{overlap length})}{\text{Number of doors}}$
Stile length	Equivalent to door height
Rail length	Door width minus 44mm
H-section length	Door width minus 47mm
Panel height (1 panel)	Door height minus 59mm
Panel height (multi panel)	Panel height divided by the quantity minus 8mm for each break
Panel width	Finished door width minus 24mm

Door construction

- Aluminium frame
- Double sided
- 8mm wood effect panel
- 4mm glass and mirror each side